

STONE

Simone



Dark Grey 612037

---

Simone

---



---

**Grey**  
612036  
60x120 cm / 23.6x47.2"

---

**Dark Grey**  
612037  
60x120 cm / 23.6x47.2"



**Light Grey**  
612035  
60x120 cm / 23.6x47.2"



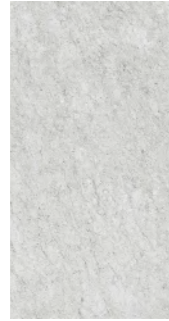
**Dark Grey**  
612037  
60x120 cm / 23.6x47.2"



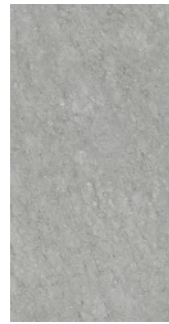
**Grey**  
612036  
60x120 cm / 23.6x47.2"



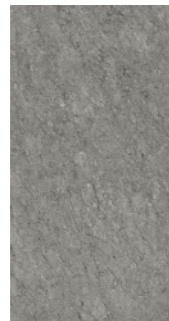
**Charcoal**  
612038  
60x120 cm / 23.6x47.2"



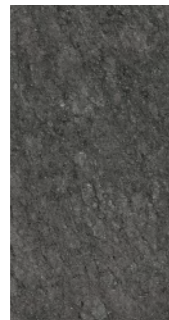
Light Grey  
612035



Grey  
612036



Dark Grey  
612037



Charcoal  
612038

Technical Specifications

	Water Absorption (%)	Dimension (%)		Thickness (%)	Straightness of Sides (%)	Central Warpage (%)	Edge Curvature (%)	Warpage (%)	Rectangularity (%)
		Length	Width						
EN14411 (ISO 13006)	≤ 0.5	≤ 1.0	≤ 1.0	± 5	± 1.0	± 0.5	± 1.0	± 0.5	± 0.5
<b>60X120 cm</b> 23.6x47.2"	≤ 0.2	± 0.3	± 0.3	± 2	± 0.3	± 0.2	± -0.4-0.6	± 0.2	± 0.13

	Breaking Strength Modulus of Rupture	Thermal Shock Resistance	Resistance to Chemical	Glazed Crack Resistance	Frost Resistance	Stain Resistance
EN14411 (ISO 13006)	≥35	Resistance	≥GB	Resistance	Resistance	≥3
<b>60X120 cm</b> 23.6x47.2"	2600-3000N	Resistance	OK	Resistance	Resistance	No

Packing List	Pcs Per M <sup>2</sup>	Pcs Per Box	Weight Per Box	Boxes Per PLT
<b>60X120 cm</b> 23.6x47.2"	—	2	31.5	28