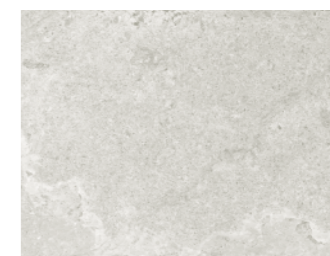


STONE

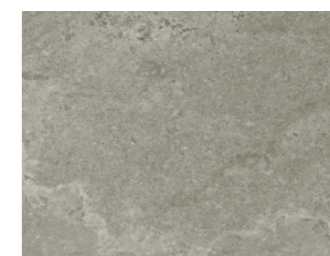
# Pietra Cardosa

Item  
cm

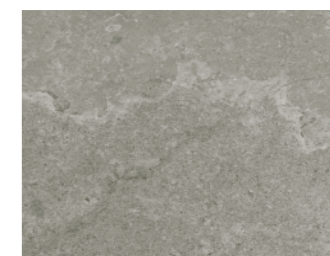
Pietra  
Cardosa  
30x60



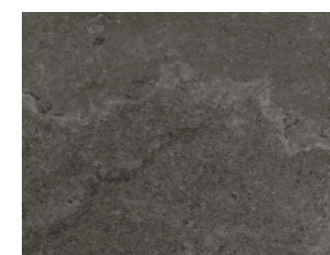
HD3F141



HD3F142



HD3F143



HD3F145

Pietra Cardosa

**HD3F142**

30x60cm / 11.8x23.6"

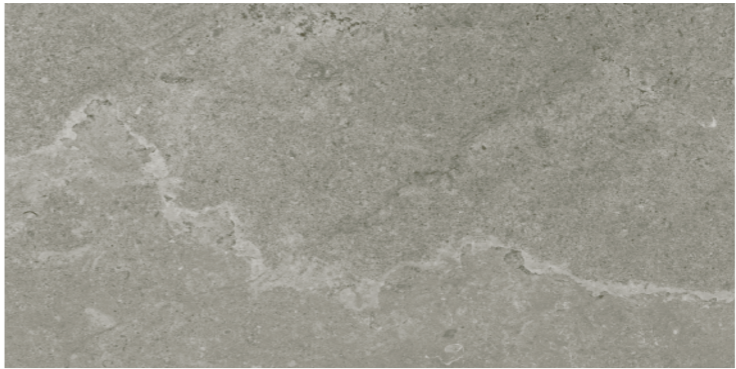


Pietra Cardosa 30x60cm / 11.8x23.6"

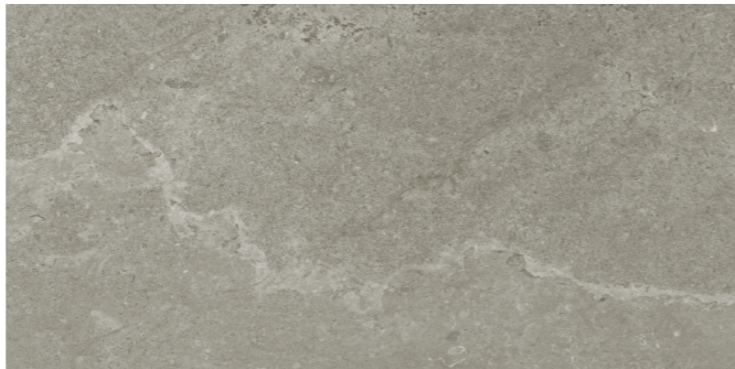
**Natural**



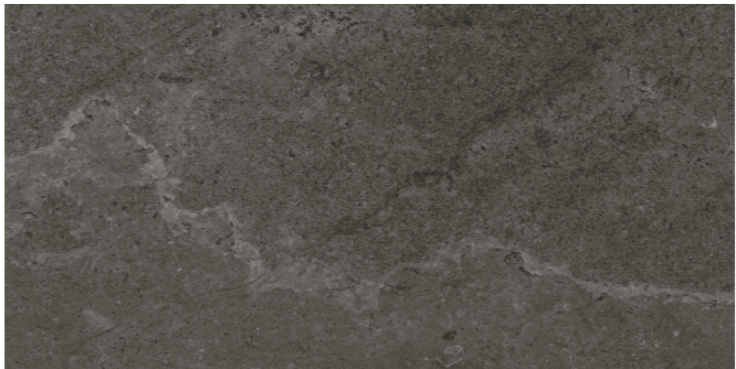
HD3F141



HD3F143










HD3F142



HD3F145

# Technical Specifications

PACKING LIST	Pcs Per M <sup>2</sup>	Pcs Per Box	Weight Per Box	Boxes Per PLT
30x60 CM / 11.8x23.6"	5.56	9	28.8	32

	 Water Absorption(%)	 Length (mm)	 Width (mm)	 Thickness (mm)	 Surface Flatness (mm)	 Abrasion Wear	 Breaking Strength(N)
30x60 CM / 11.8x23.6"	≤ 0.5	± 0.3	± 0.3	± 0.3	+0.6~-0.2	Minimum class 3	S≥1800N / R≥38N/mm <sup>2</sup>

