

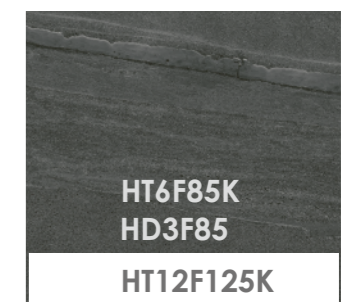
STONE

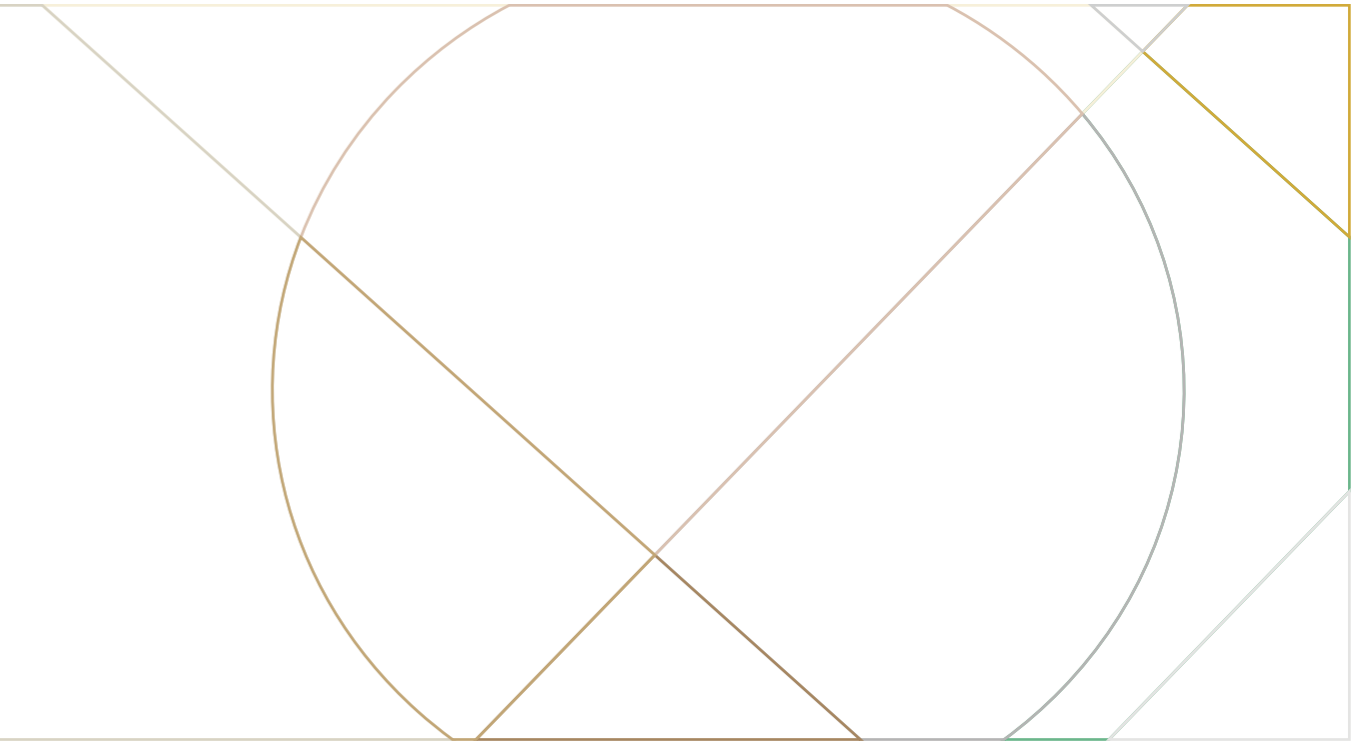
Lime Stone

▼ THICKNESS
▬
▲ 2CM

Item
cm

Lime Stone
60x60x2
30x60
60x120





Lime Stone

HT6F82K / HT6F83K

Beige / Dark Grey

60x60x2 cm / 23.6x23.6x0.8"

THICKNESS
2CM

Lime Stone

60x60x2cm / 23.6x23.6x0.8"

Grip

R10

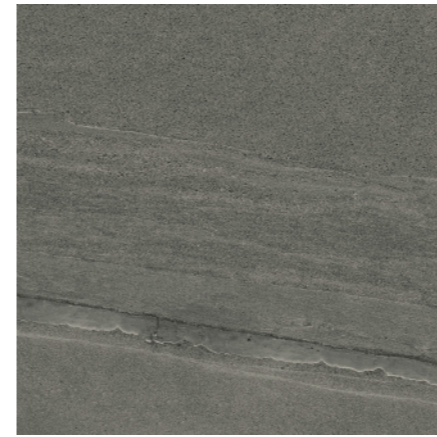
P4



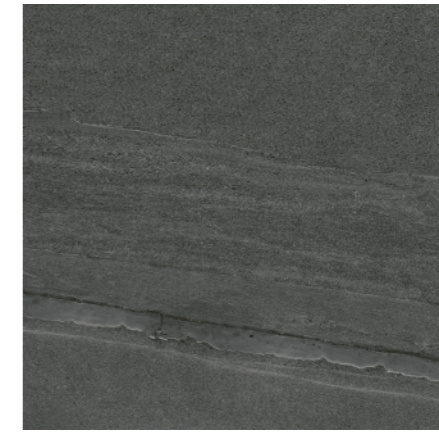
HT6F81K
Sand



HT6F82K
Beige



HT6F83K
Dark Grey



HT6F85K
Anthracite

Lime Stone 30x60cm / 11.8x23.6" • 60x120cm / 23.6x47.2"

Natural



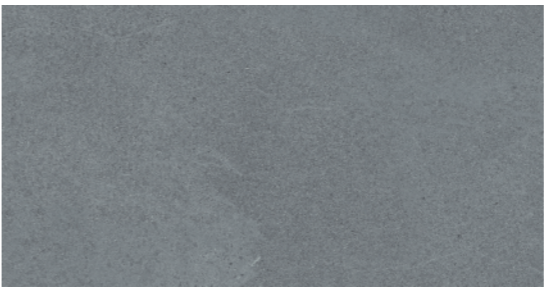
HD3F80 / HD12F80
Ivory



HD3F81
Sand



HD3F82 / HD12F82
Beige



HD3F83 / HD12F83
Dark Grey



HD3F85 / HD12F85
Anthracite

Technical Specifications

PACKING LIST	Pcs Per M ²	Pcs Per Box	Weight Per Box	Boxes Per PLT
60x60x2 CM / 23.6x23.6x0.8"	2.78	2	33.33	32
30x60 CM / 11.8x23.6"	5.56	9	28.8	32
60x120CM / 23.6x47.2"	1.39	2	35.39	48 / 30

	 Water Absorption(%)	 Length (mm)	 Width (mm)	 Thickness (mm)	 Surface Flatness (mm)	 Abrasion Wear	 Breaking Strength(N)
60x60x2 CM / 23.6x23.6x0.8"	≤ 0.5	± 0.6	± 0.6	± 0.6	+0.8~-0.4	Minimum class 3	S≥10000N / R≥38N/mm ²
30x60 CM / 11.8x23.6"	≤ 0.5	± 0.3	± 0.3	± 0.3	+0.6~-0.2	Minimum class 3	S≥1800N / R≥38N/mm ²
60x120CM / 23.6x47.2"	≤ 0.5	± 0.4	± 0.4	± 0.4	+0.8~-0.4	Minimum class 3	S≥2200N / R≥38N/mm ²

