

STONE

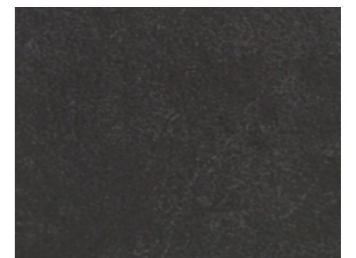
# Eon Stone

Item  
cm

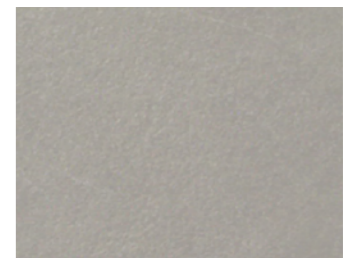
Eon Stone  
30x60



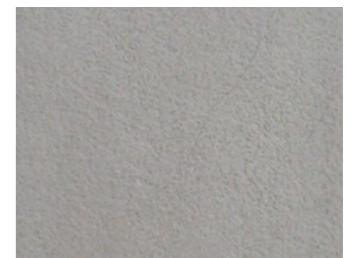
G6302



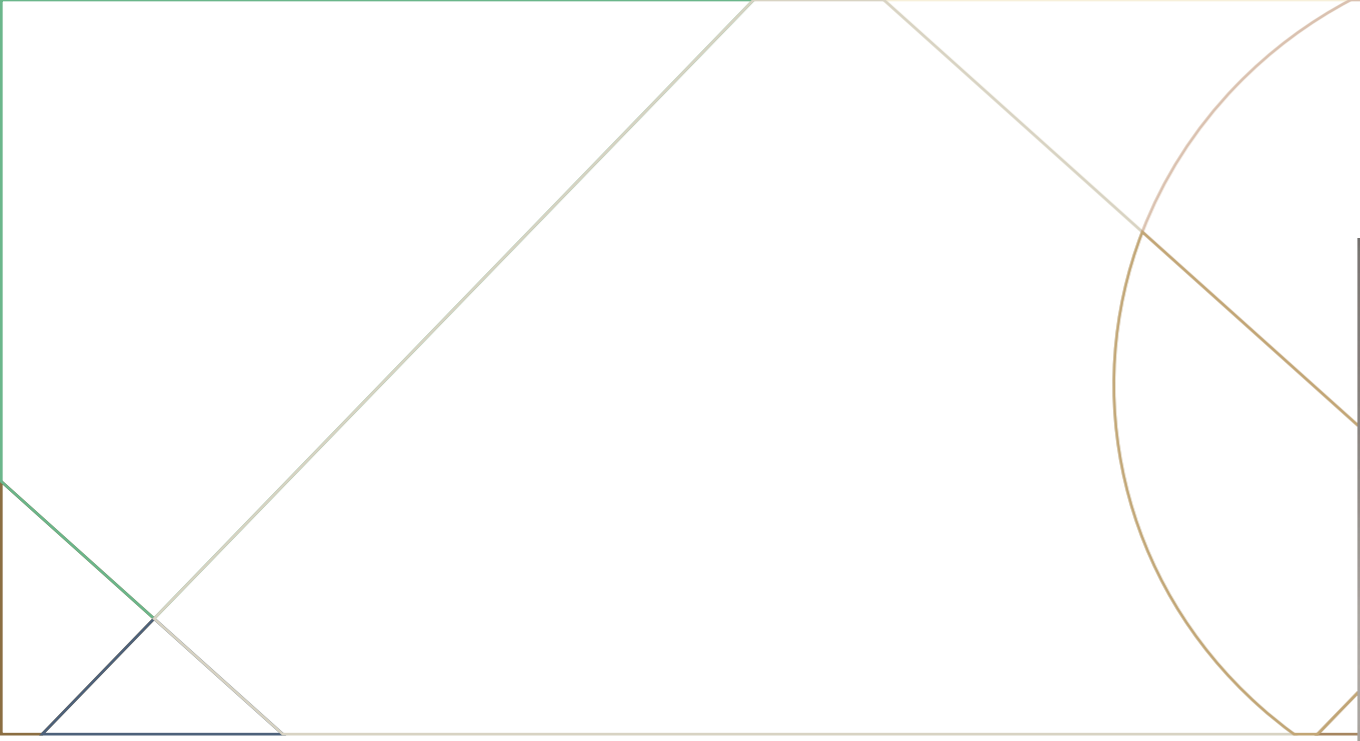
G6303



G6305



G6307



Eon Stone  
**G6305**  
Light Grey 30x60cm / 11.8x23.6"

Eon Stone 30x60cm / 11.8x23.6"

**Structured**

**R11**  
**P2**



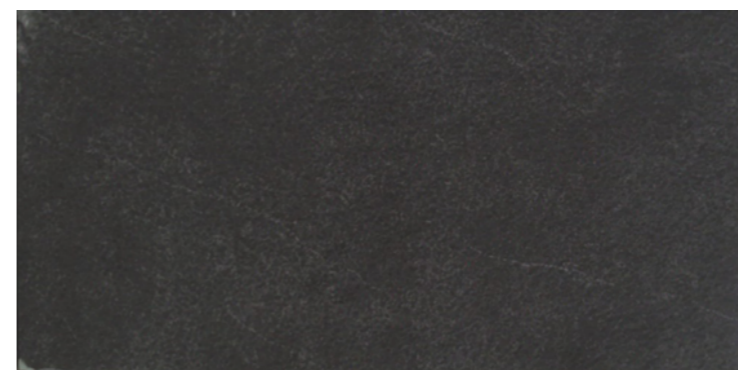
**G6302**  
White



**G6307**  
Grey









**G6305**  
Light Grey



**G6303**  
Black

# Technical Specifications

PACKING LIST	Pcs Per M <sup>2</sup>	Pcs Per Box	Weight Per Box	Boxes Per PLT
30x60 CM / 11.8x23.6"	5.56	9	28.8	32

	 Water Absorption(%)	 Length (mm)	 Width (mm)	 Thickness (mm)	 Surface Flatness (mm)	 Abrasion Wear	 Breaking Strength(N)
30x60 CM / 11.8x23.6"	≤ 0.5	± 0.3	± 0.3	± 0.3	+0.6~-0.2	Minimum class 3	S≥1800N / R≥38N/mm <sup>2</sup>

